

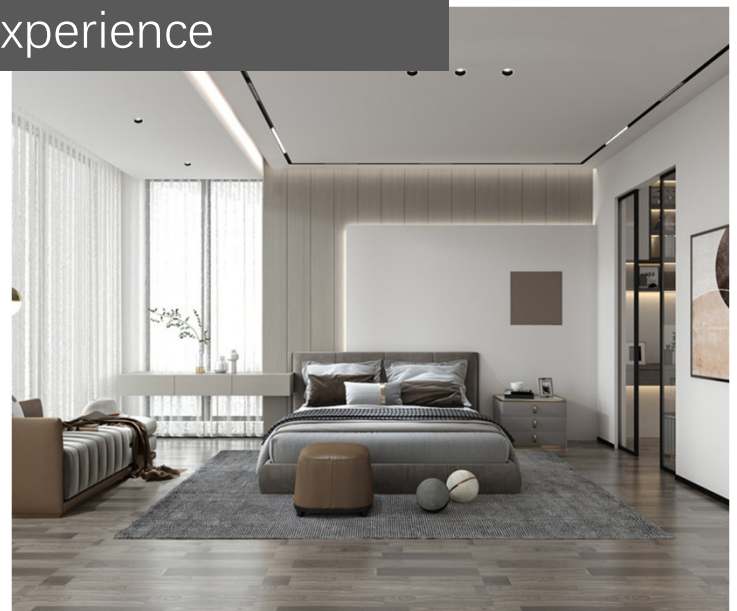
## Kazi Pro LED Down Light



Kazi Pro LED down light is designed to provide spot or general (various beam angle options) super high quality lighting for the space. Its anti glare design of deep light source position and black reflector option allows the human eye to be in an extremely comfortable state. It uses OSRAM COB chip with a color rendering index (CRI) greater than 95 and a lumen efficiency of 130lm/W.

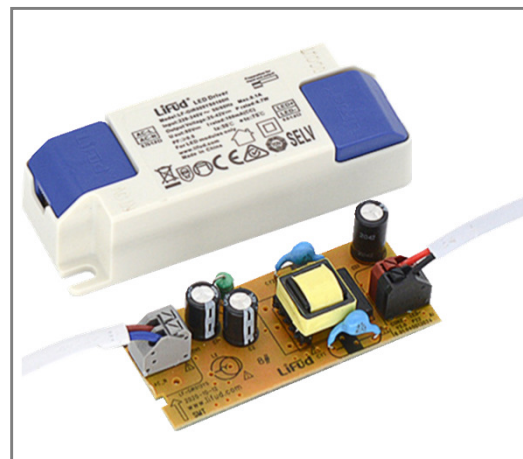


Safe, Stable, Healthy, and Comfortable  
Lighting Experience



# GARNDE

White, Gun-Black and Black Reflector Options



LiFud brand Isolated LED Driver

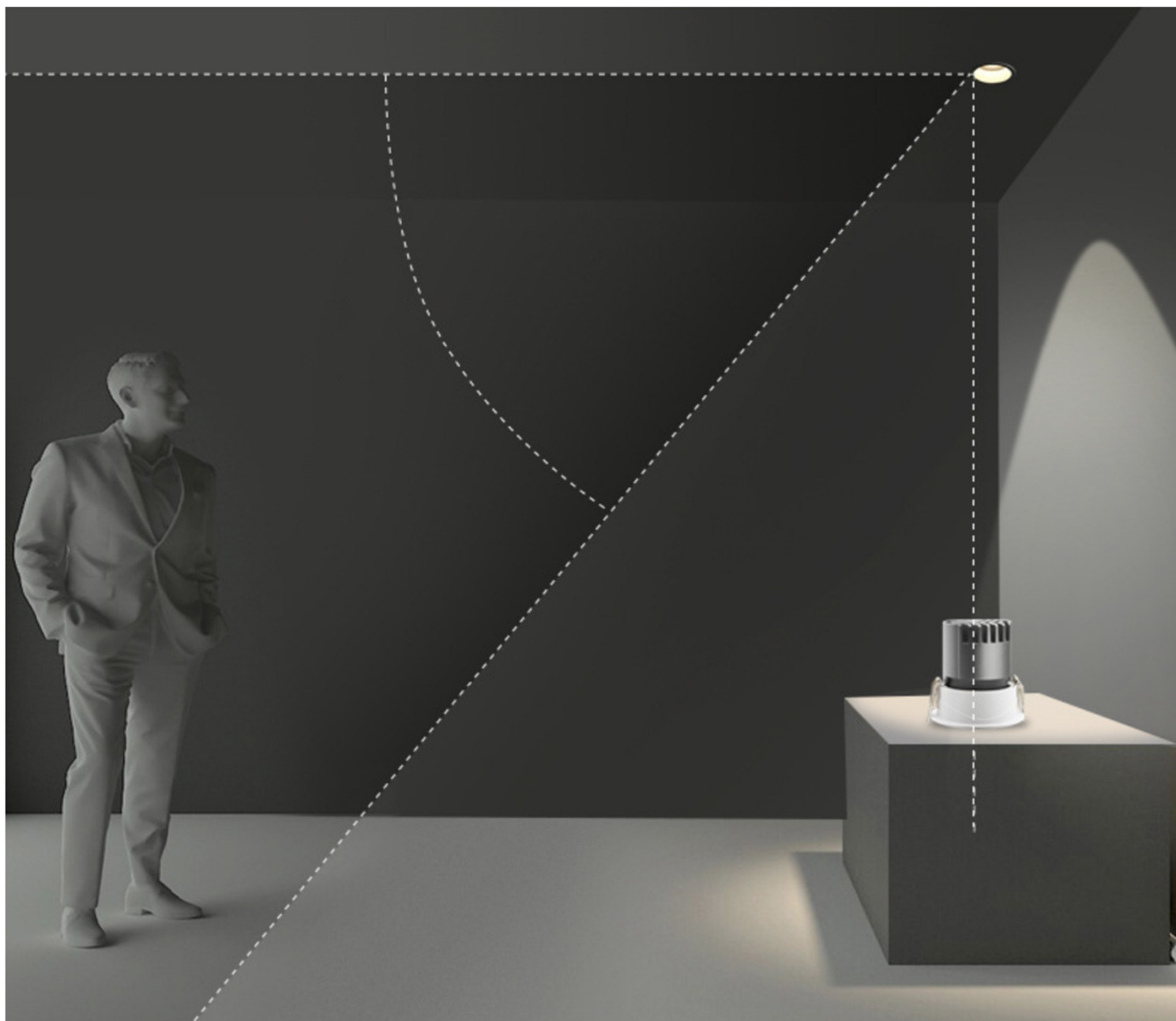
OSRAM COB



	KZ5	KZ7	KZ10	KZ13	KZ15
<b>Wattage</b>	5W	7W	10W	13W	15W
<b>Lamp Housing</b>	Aluminum die-casting, powder coated				
<b>Color</b>	White				
<b>Dimensions</b>	Ø65 x H80	Ø85 x H85	Ø85 x H110	Ø110 x H118	Ø110 x H118
<b>Hole Cutting</b>	Ø55	Ø75	Ø75	Ø95	Ø95
<b>Reflector Color Options</b>	White, Gun-Black, Black				
<b>Input Voltage</b>	100-240VAC, 50/60Hz				
<b>LED Driver</b>	LiFud brand Isolated LED driver				
<b>LED Chip</b>	OSRAM COB chip				
<b>CCT Options</b>	3000K, 3500K, 4000K, 6000K				
<b>CRI</b>	≥ 95				
<b>Beam Angle Options</b>	15° 24° 36° 55°				
<b>IP Class</b>	IP20				
<b>Power Factor</b>	0.9				
<b>Dimmable</b>	No				
<b>Flicker</b>	No				
<b>Lifetime</b>	50,000 hours				

# Anti Glare Design

Deep Light Source Position and Black Reflector Option allows the human eye to be in an extremely comfortable state



# GARNDE



# No Flicker, High Brightness, High Color Rendering Index



No visual flicker, natural and comfortable,  
creating a healthy lighting environment.



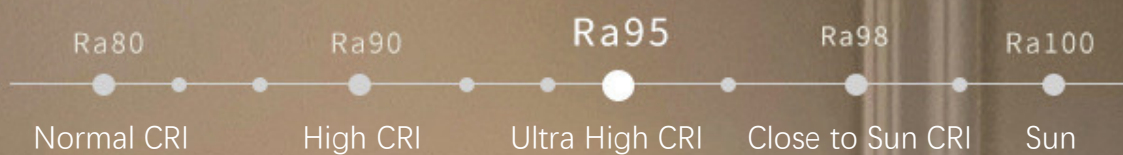
# GARNDE



Natural Color

# OSRAM High Color Rendering Index COB

**Ra 95**



4 CCT Options

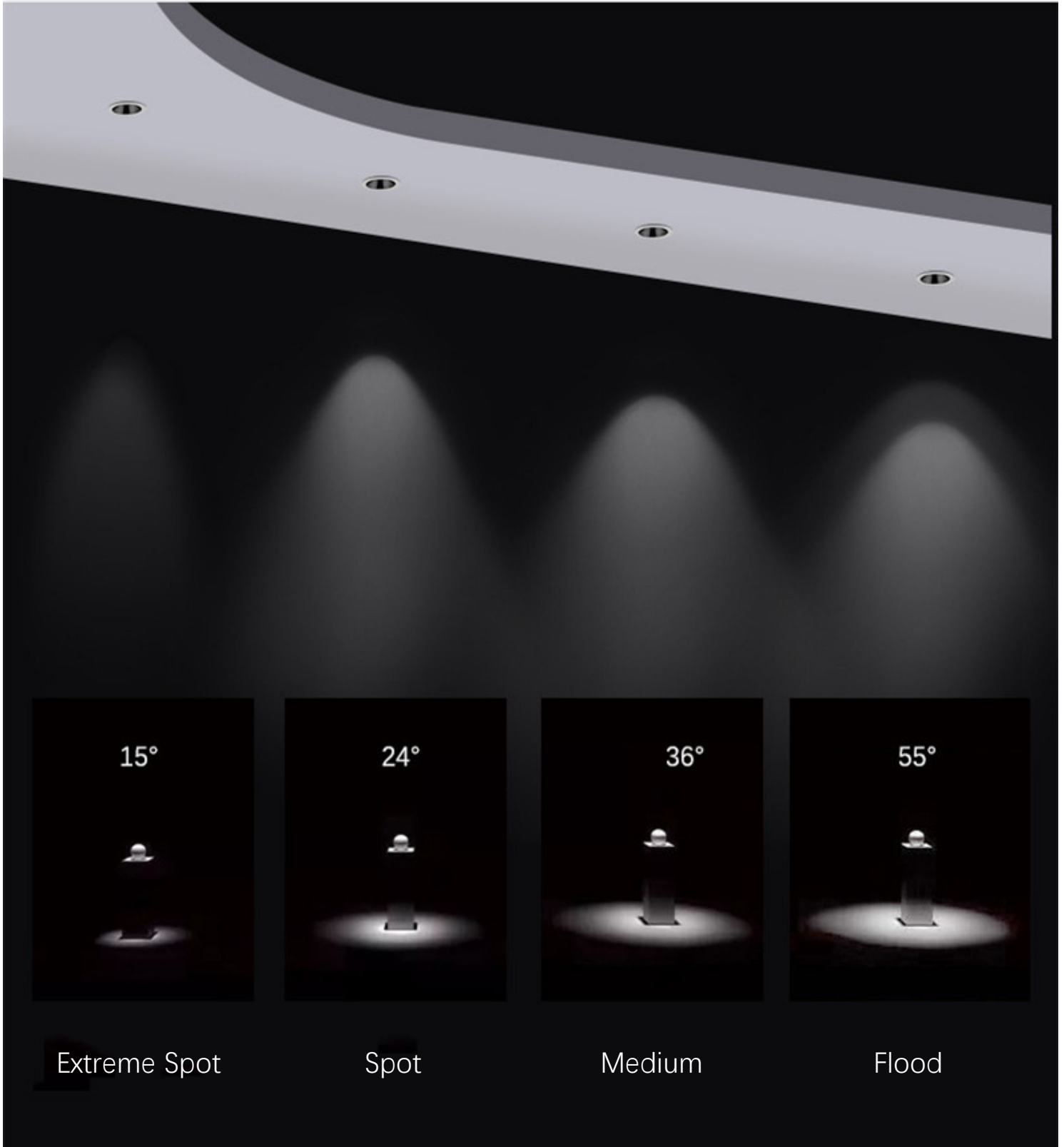


Bathing in the sunlight and  
enjoying the quality of light

**GARNDE**

## Four Beam Angle Options

Applied to Spot Lighting or Flood Lighting



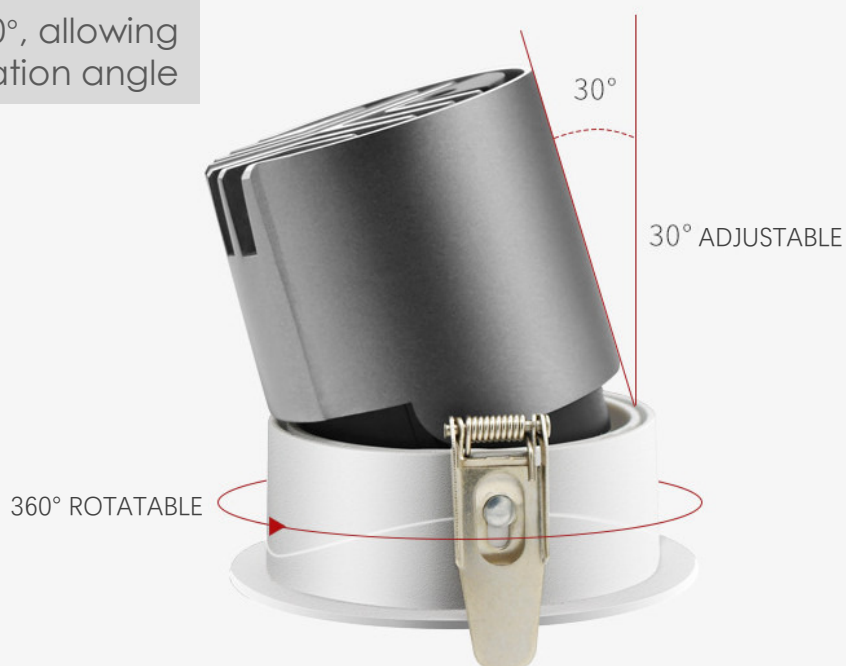


## Good Configuration to Ensure Lighting Quality



# Provide More Flexible Lighting

Adjust left and right by 30°, allowing for free selection of irradiation angle



DIRECT IRRADIATION



LEFT ADJUSTMENT  
30° IRRADIATION



RIGHT ADJUSTMENT  
30° IRRADIATION

## Die Cast Aluminum Radiator



Die cast aluminum integrated radiator, fast heat dissipation, reducing light source decay, and extending service life

ALUMINUM

ALUMINUM

# GARNDE



## Installation Processes



1. Drill hole in the ceiling according to the lighting fixture hole size



2. Take off the front cover from the lighting fixture and place it in the ceiling hole



3. Connect the power cord, insert the lamp body into the front cover and fasten it tightly



4. Installation completed, test light on